

# SGP

## Portfolio

TRANSPORT

## Services

ARCHITECTURE

CDM PRINCIPAL  
DESIGNER

MASTERPLANNING

INTERIOR + FIT-OUT

BUILDING  
REGULATIONS  
PRINCIPAL  
DESIGNER

BIM

CGI



ABOUT US	<b>01</b>	Who we are + what we do	3	SECTORS	<b>08</b>	Our experience	12
	<b>02</b>	Introduction	4				
	<b>03</b>	Transport in numbers	5	FURTHER INFORMATION	<b>09</b>	Social value	36
	<b>04</b>	Our core values	6		<b>10</b>	Who we work with	38
	<b>05</b>	Our vision	7		<b>11</b>	Awards	39
	<b>06</b>	Sector + service overview	8				
	<b>07</b>	Key contacts	9	CONTACT	<b>12</b>	Visit us	40



# Who we are + what we do

- Established 1970
- 100+ staff
- AJ100 practice
- RIBA President's Award Winner
- Public and private sector
- Varied and diverse portfolio
- Listening to our clients
- Building long-term relationships
- Committed to nurturing an open, inclusive, fair and supportive business
- Embrace duty of care to our community, environment and society
- Knowledge share environment
- Studios across the UK in London, Leicester, Leeds, Solihull and Birmingham
- International partnering practice in Sofia

# Introduction

Stephen George + Partners' Transport team has over 60 years' combined sector experience, delivering a portfolio valued at more than £400 million in the past 7 years.

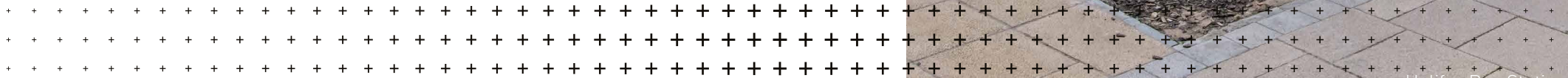
Delivered Projects £250 million+

Projects in Development £150 million+

Working across road, rail, and aviation, SGP supports Councils and Transport Authorities on projects ranging from new and upgraded stations, training centres, multimodal interchanges and bus / rail maintenance depots to transport-led masterplanning and regeneration initiatives. With a hands-on, collaborative approach, SGP work closely with clients and stakeholders to understand objectives, add value, and deliver creative, practical solutions. Our technical expertise and specialist understanding of transport architecture across road, rail and air, guide projects smoothly from inception through to completion.

SGP provide the full suite of design support including initial feasibility and site assessment, SOBC and FBC support, stakeholder consultation, accessibility and H&S audits, design through to project delivery, technical advisor role and post-completion management strategies.

Sustainability is at the heart of our work, using locally sourced materials, renewable technologies, and forward-looking design to support cleaner transport solutions and future innovations such as electric fleets.



# Transport in numbers

9

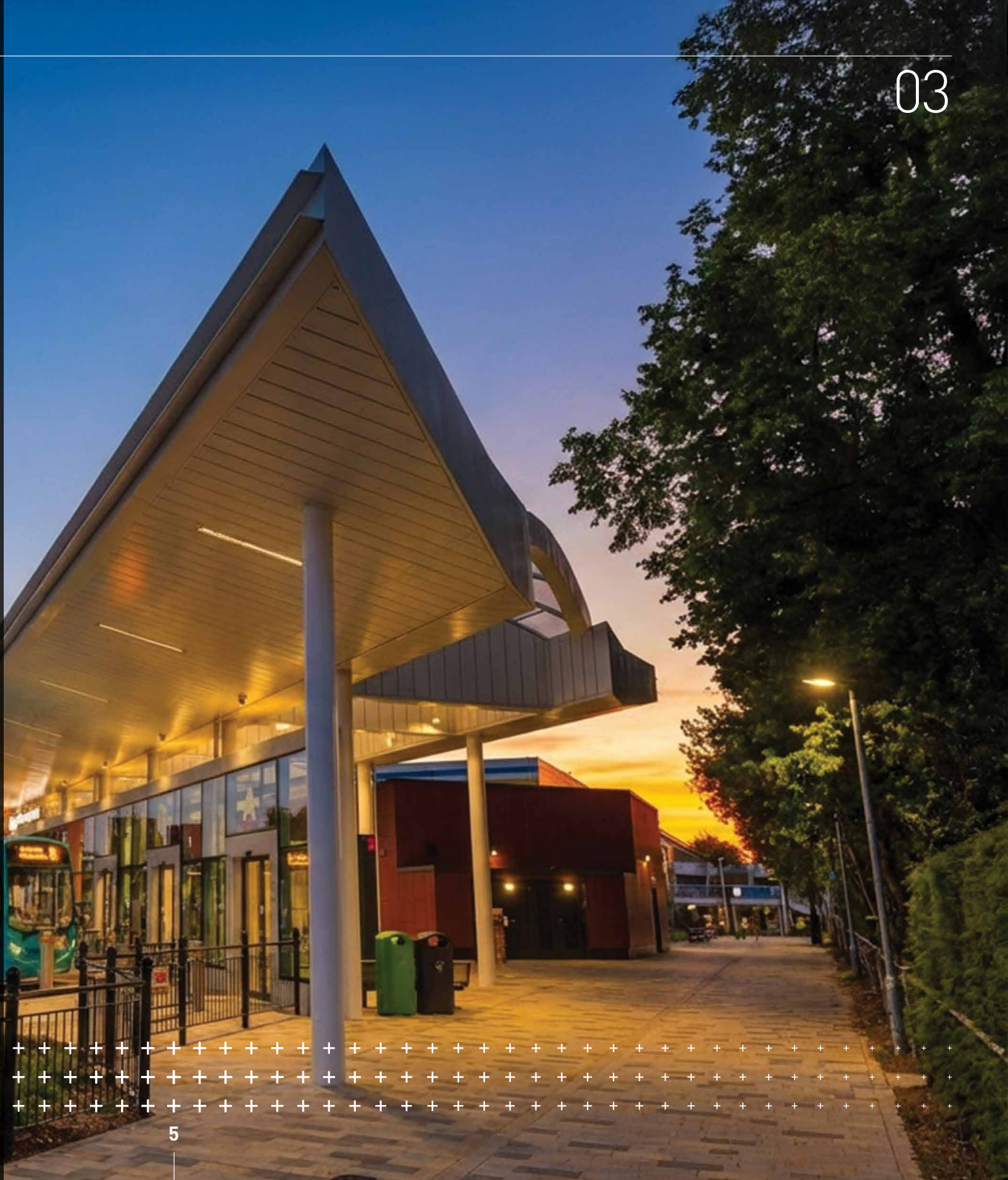
awards in the last 5 years

60+

years transport architecture experience

£400 million+

portfolio value over the last 7 years



# Our core values

## + Fairness

Impartial treatment of all without discrimination. Providing an open environment where all are encouraged to offer ideas. Being consistent in our approach.

## + Integrity

Honesty. Doing what we say and saying what we do. Being open, clear and direct with one another.

## + Quality

Working to the highest possible standards to ensure consistency across everything that we do including the following two values...

## + Service

Offering the best possible assistance and advice to our clients. Going the extra mile to ensure all deadlines are met and key criteria considered.

## + Design

Maintaining the highest possible architectural standards, giving us the freedom to undertake exciting projects and to create great places.

## + Social responsibility

We believe we have a responsibility to society and will give freely of our time to help others.





**+**  
**we care**  
**we challenge**  
**we deliver**

## Our vision

We care about client service, values, culture + vision.

We design + deliver a diverse portfolio promoting social value + better places.

# Sector + service overview

The sectors we work in

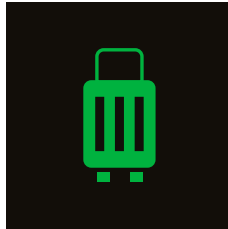
Education



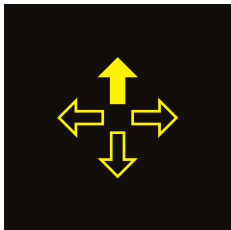
Healthcare



Leisure + Hospitality



Logistics



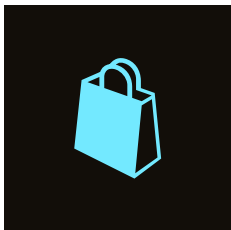
Office



Residential



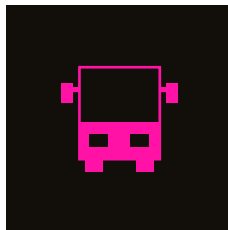
Retail



Science + Innovation

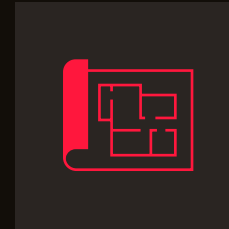


Transport

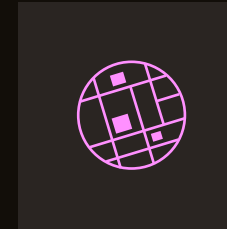


The following services can be provided in house by SGP

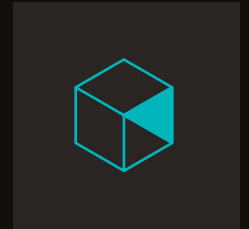
Architecture



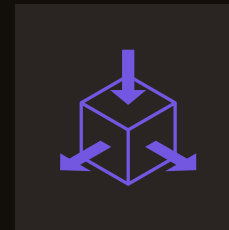
Masterplanning



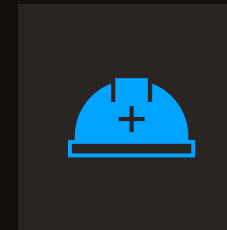
Interior + Fit-out



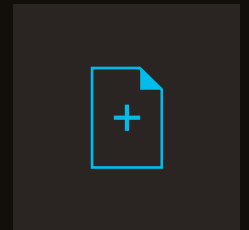
BIM



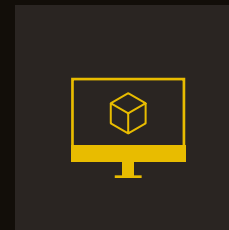
CDM Principal Designer



Building Regulations Principal Designer



CGI



Visit our website to find out more

[+ ABOUT OUR SECTORS](#)

[+ ABOUT OUR SERVICES](#)

# Key contacts



## Alistair Branch

BA (HONS) DIP ARCH RIBA ARB

Partner | Transport Sector Lead

### PERSONAL PROFILE

Since joining Stephen George + Partners in 2016 to spearhead the development of our transportation sector, Alistair has built a strong track record of delivering innovative, award-winning design solutions for key transport clients, including Network Rail, TOCs, passenger transport authorities, local authorities and contractors.

A design-led Chartered Architect, Alistair is recognised for his ability to listen, problem-solve and respond to complex project constraints. He delivers client requirements through flexibility, efficiency and commercial awareness, while maintaining a strong focus on design quality, sustainability, buildability, and health and safety.

Alistair has played a leading role in securing over £250 million of public sector transport schemes, including SGP's first major transport commission, the £9m Rail Training Centre for Nexus in South Shields. He has also been instrumental in developing internal procedures that improve efficiency and consistency across project design and delivery.

+ MORE ABOUT ALISTAIR



## Sue Eyre

ARB, RIBA

Studio Director

### PERSONAL PROFILE

Joining Stephen George + Partners in 2021, Sue is a Studio Director with a wealth of design and technical experience, and strong sector synergies across Transport, Housing, Education, Sport and Leisure, Interior Design and Hospitality.

With a passion for design and process, Sue also brings additional value to project teams as a qualified DQI Facilitator (Design Quality Indicators), supporting the delivery of high-quality outcomes aligned to client aspirations.

Sue supports SGP's Transport teams in the delivery of significant road and rail projects. Highly motivated and hardworking, she leads teams through strong organisation, planning and design skills, while building excellent working relationships and coordinating complex projects with consultants, contractors and wider stakeholders.

+ MORE ABOUT SUE

# Key contacts



## Matt Beaumont

RIBA ARB MA DIP ARCH BA(HONS)

Associate

### PERSONAL PROFILE

Having joined Stephen George + Partners in 2017 as a Principal Architect, Matt was promoted to Associate within our Leeds office in 2020, with a focus on public sector transportation projects.

With over ten years' specialist experience in the transport sector, Matt has developed a strong track record of delivering complex, award-winning infrastructure schemes from inception to completion. His portfolio includes projects for key clients such as Network Rail, Transport for Greater Manchester and West Yorkshire Combined Authority.

Alongside wider experience across leisure, commercial, industrial and transport projects, Matt has made a significant contribution to SGP's Matrix Delivery and Revit/BIM Groups. He has championed the continued development and adoption of Revit and BIM within the Leeds office, supporting consistent and efficient project delivery.



## Kenny Leadbeater

ACIAT BA(HONS) DIP ARCH PG DIP AP RIBA LRPS

Associate

### PERSONAL PROFILE

Kenny Leadbeater is a Chartered Architect with strong design skills and proven project-running experience. He delivers projects with a clear focus on quality, coordination and efficient outcomes for clients and wider project teams.

Kenny has worked across a broad range of sectors, including office refurbishments and new-build headquarters, high-end residential, aviation masterplanning and airside buildings, education and commercial development. His experience spans both complex and large-scale schemes, from early design through to delivery.

With a well-rounded technical grounding and a collaborative approach, Kenny supports project teams in delivering buildable, high-quality design solutions that respond to client requirements and programme demands.

+ MORE ABOUT MATT

+ MORE ABOUT KENNY



# Key contacts



## Rachel Trend

BSC(HONS) DIPARCH RIBA ARB

Principal Architect | Heritage & Sustainability Lead

### PERSONAL PROFILE

Rachel joined Stephen George + Partners in 2023 as an Architect and works within our Transport team, delivering concept and technical design solutions through planning and technical stages.

Her role includes producing drawings and planning statements, while liaising closely with clients, contractors and the wider consultant team.

With more than seven years' experience across residential, heritage and commercial projects, Rachel brings strong technical knowledge in sustainable design and the conservation of heritage assets, including the refurbishment and extension of Listed buildings. She is a Certified Passive House Designer and has experience working with natural materials in construction, supporting low-energy and responsible design outcomes.

+ MORE ABOUT RACHEL



## Liam Sheridan

Architectural Technologist

### PERSONAL PROFILE

Utilising BIM and digital design tools, Liam supports the delivery of projects across Stephen George + Partners' transport, industrial and logistics, healthcare and interiors sectors.

His role includes producing detailed technical drawings, ensuring compliance with building regulations, and coordinating with consultants and contractors.

With a first-class degree in architectural technology, Liam is working towards Chartered MCIAT status and has a strong interest in BIM and emerging technologies. He is particularly focused on how digital tools can support more efficient, coordinated and sustainable project delivery.

+ MORE ABOUT LIAM



# Our experience

We have capabilities across all aspects of the transport sector, from modern railway stations and rail depots to new bus stations, interchanges and transport-led masterplanning that supports local and regional regeneration.

We work closely with Local Authorities and Transport Authorities to shape projects from the earliest strategic brief stage, defining objectives and developing concepts through to outline and full business case approval. Our experience ensures schemes are robust, deliverable and aligned with funding, programme and operational requirements.

From detailed design through construction to handover and use, we provide consistent technical leadership and, where required, act as Technical Advisor within design and build environments, giving clients confidence at every stage of delivery.

+ VIEW ONLINE

# Halifax Bus Station

## West Yorkshire

Delivered as part of a wider regeneration programme, this town centre bus station redevelopment created a modern transport hub that strengthened connectivity and supported the long-term vitality of the centre.

The project integrated three listed structures, balancing heritage value with modern passenger needs. Complex level changes were carefully coordinated with engineering and transport teams to ensure safe, accessible movement and efficient operations.

Phased delivery brought the new concourse and part of the bus stands into early use, maintaining services while the remaining works were completed. A fully green roof, heat pumps, photovoltaic panels and future EV charging provision reduced carbon and delivered long-term energy and maintenance savings.

### Key information

<b>Client</b>	WYCA
<b>Services</b>	Architecture, Masterplanning, CDM PD,
<b>Size</b>	1,830 sqm (19,700 sqft)
<b>Value</b>	£20.7 million
<b>Completed</b>	2024
<b>Contractor</b>	Willmott Dixon Construction Ltd



[+ VIEW ONLINE](#)

## + Awards

### Winner

British Construction Industry Awards Transport of the Year 2024

CIHT Environmental Sustainability 2023

### Shortlisted

RIBA Journal MacEwen Award Special Mention 2025

Transport Times Design Engineering & Construction Project of the Year 2024

UKREiiF Awards Infrastructure Project of the Year 2022

Civic Transport Awards Transport Project of the Year 2024

Construction News (CN) Awards Low Carbon Project of the Year 2025



[+ VIEW ONLINE](#)

# Stevenage Bus Station

Hertfordshire

A new Bus Interchange was delivered for Stevenage town centre, enabling the release of a key redevelopment site and supporting progress of the wider SG1 regeneration programme.

The development provided a step change in passenger facilities and operational performance, improving accessibility and safety while strengthening connectivity between bus services, the railway station and the town centre.

A striking canopy structure created a clear sense of arrival and a brighter concourse environment, combining strong civic presence with a high-quality public transport experience for the community.

## Key information

<b>Client</b>	Stevenage Borough Council
<b>Services</b>	Architecture
<b>Value</b>	£8 million
<b>Size</b>	1,843 sqm (19,837 sqft)
<b>Completed</b>	2021
<b>Contractor</b>	Willmott Dixon Construction Ltd



+ VIEW ONLINE



+ Awards

Winner

Constructing Excellence Regional Awards Project of the Year 2022

+ VIEW ONLINE

# Nexus Training Facility

## South Shields

A state-of-the-art Metro Maintenance and Renewals Skills Centre was delivered at South Shields, providing a training facility for more than 1,000 people working across the Metro rail system.

Maintenance and training were combined within a single building, centred around an 80m-long double-height maintenance space with supporting teaching and staff facilities. An overbudget two-building proposal was reimagined as one efficient solution.

The unified approach reduced capital and operational costs, improved coordination and delivered a flexible, cost-effective outcome that maximised value for Nexus.

### Key information

<b>Client</b>	Nexus
<b>Services</b>	Architecture
<b>Size</b>	3,310 sqm (33,500 sqft)
<b>Value</b>	£8.4 million
<b>Completed</b>	2020
<b>Contractor</b>	Galliford Try



# NEXUS LEARNING CENTRE



1

2

+ VIEW ONLINE

# Bletchley Rail Depot

## Milton Keynes

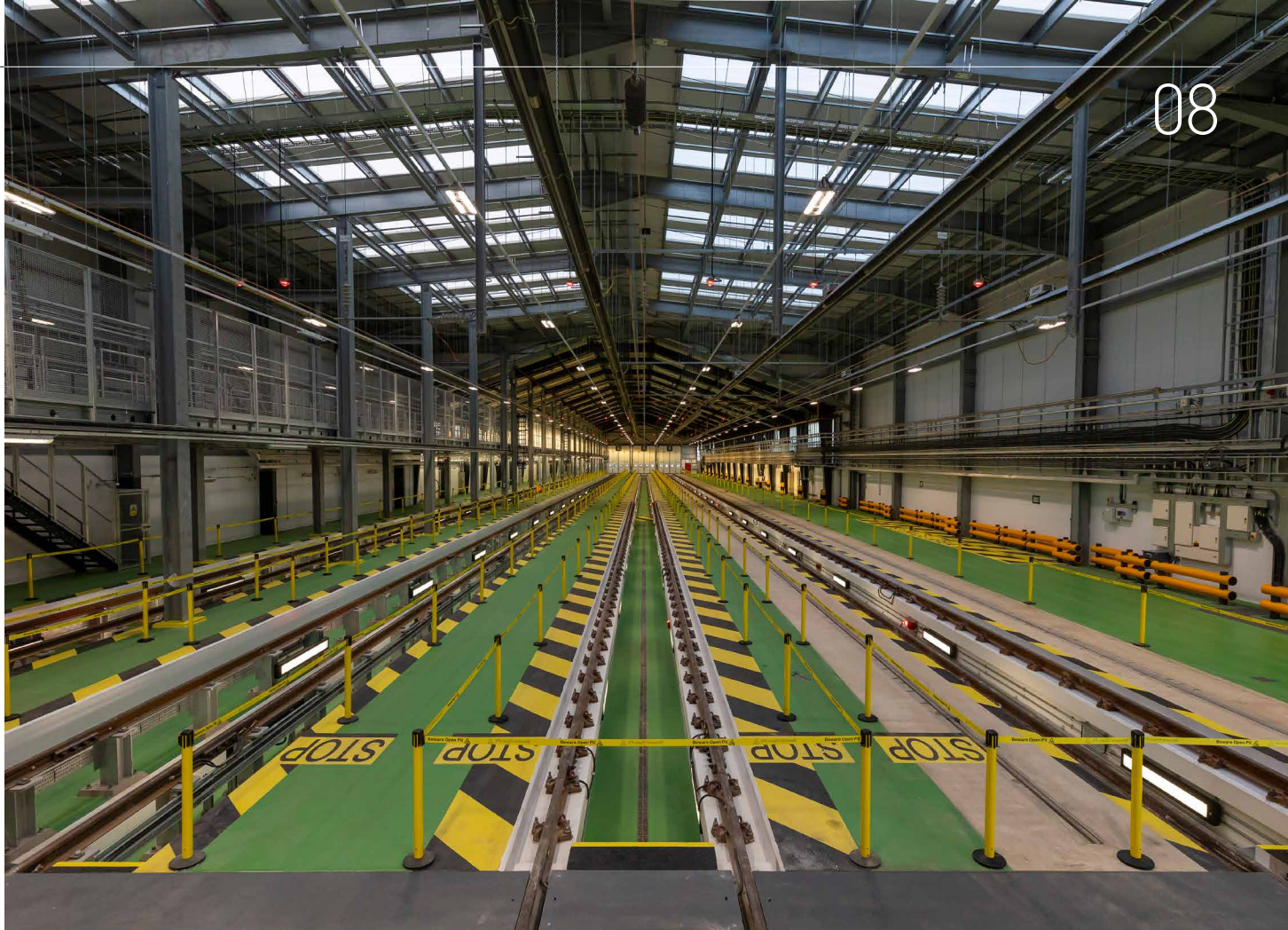
A major extension was delivered to the existing Bletchley Rail Depot to support increased fleet capacity and long-term operational resilience.

The development upgraded office accommodation and expanded depot infrastructure, improving day-to-day functionality through coordinated layout planning and enhanced operational support spaces. External works strengthened site performance and access, including new sidings, plant provision, access roads and parking, creating a future-ready depot environment.

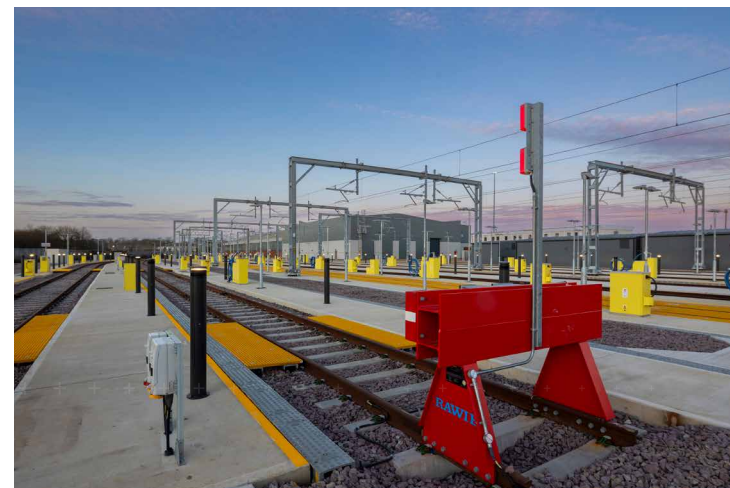
The design enabled the depot to become the main base for maintenance of the Class 730 units, while integrating sustainable infrastructure including a solar farm and EV charging facilities. Generating 170kW, the solar farm supported EV charging and reduced operational carbon, delivering long-term value for the client.

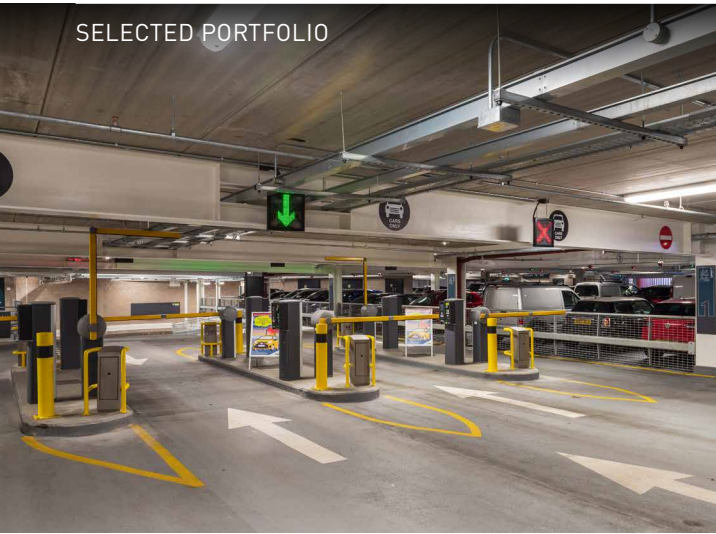
### Key information

<b>Client</b>	West Midlands Trains
<b>Services</b>	Architecture, BIM
<b>Value</b>	£66 million
<b>Completed</b>	2025
<b>Contractor</b>	Taylor Woodrow



Images: West Midlands Trains, London Northwestern Railway and Taylor Woodrow





SELECTED PORTFOLIO



[+ VIEW ONLINE](#)

# Broadmarsh Bus Station

Nottingham

Broadmarsh was transformed into a major mixed-use transport and civic destination in Nottingham city centre, bringing together a new bus station, multi-storey car park, library and retail space as a key regeneration project for the City Council.

The development delivered a complex eight-level structure with a high-quality external palette, giving the building a strong presence while discreetly concealing the operational use within.

Sustainability and long-term performance were embedded through one of the UK's greenest car parks, including rooftop solar PV and electric vehicle charging, creating a future-ready public asset recognised through multiple industry awards.

## Key information

<b>Client</b>	Nottingham City Council
<b>Services</b>	Architecture, CDM PD
<b>Value</b>	£43 million
<b>Completed</b>	2021



+ VIEW ONLINE

+  
**Awards**

**Winner**

**Constructing Excellence Collaborative Working 2022**

**Brick Awards Commercial Development 2022**

**Brick Awards Sustainable Development 2022**

**Brick Awards Overall Award 2022**

**UK Parking Awards Best new Car Park 2022**

[+ VIEW ONLINE](#)

# DRIVE

## Chesterfield

The Derbyshire Rail Industry Innovation Vehicle (DRIVE) was delivered as a modern rail innovation and training centre, forming part of the wider Staveley Town Deal programme and strengthening regional rail capability.

The development provided flexible teaching spaces, specialist research and development facilities including a digital laboratory, and commercial workshop accommodation, supporting education, innovation and supply chain activity under one roof.

A sensitive delivery approach responded to the complex rail setting, with design refinements improving buildability, compliance and long-term value while maintaining architectural quality and integrating carefully with existing heritage structures and live infrastructure.

### Key information

<b>Client</b>	Chesterfield Borough Council
<b>Services</b>	Architecture, CGI, Interior Design, CDM and BRPD Principal Designer
<b>Value</b>	£4 million
<b>Completed</b>	2026
<b>Contractor</b>	Stepnell





## Bus Transport Hub - Emerging Concept

SGP have developed a new concept for a new bus transport hub with a predominantly glazed, fully enclosed passenger concourse and extensive ancillary accommodation including retail, information, public facilities and driver accommodation.

Set within a dramatic folded roof structure connecting with the ground and supported on elegant structural trees, designed also to take away any roof water. The folded roof flows through the site, emphasising flow and movement and drawing passengers through the facility. Movement is reinforced with linear rooflights integrated within the roof and staggered as you move down the passenger concourse.

The roof folds down at the entrance to the site, framing the passenger entrance. The simple extruded sectional form ensures a similar high-quality aesthetic is provided to both bus concourse entrances. The ancillary accommodation follows a similar angular form, clad with expressed zinc cladding, colour contrasting with the seamed folder roof cladding.

### Key information

<b>Client</b>	Undisclosed
<b>Services</b>	Architecture: RIBA Stage 2
<b>Completed</b>	2025



+ VIEW ONLINE

# SYMCA EV Bus Depot Feasibility Study

South Yorkshire

Proposals were developed for a series of new EV bus depots across South Yorkshire, supporting SYMCA’s decision-making on Bus Franchising and long-term fleet strategy. New and existing depots were planned to support a combined capacity of around 750 buses.

A depot scoping matrix defined accommodation, maintenance and operational requirements, including dual-fuelling infrastructure, EV charging provision and external works assumptions to support outline cost planning.

Parametric depot models enabled rapid site testing across multiple capacities, improving programme certainty, option appraisal consistency and early CAPEX and OPEX decision-making.

## Key information

<b>Client</b>	South Yorkshire Mayoral Combined Authority
<b>Services</b>	Architecture: RIBA Stage 1
<b>Completed</b>	2025



# WYCA Travel Centre

## Leeds and Bradford

Modern travel centre concepts were developed for WYCA to transform customer service environments within bus stations. The approach reimaged ticketing and information provision through contemporary counters, bank-style service layouts, touch-screen information and e-ticketing.

The concept created a consistent, customer-focused experience designed to improve efficiency, clarity and accessibility across busy transport hubs.

The new model was developed for roll-out across multiple locations, including Leeds, Bradford, Huddersfield and Halifax, creating a unified standard that could be adapted to different station layouts and operational needs.

### Key information

<b>Client</b>	West Yorkshire Combined Authority
<b>Services</b>	Architecture
<b>Completed</b>	2024





[+ VIEW ONLINE](#)

# Halifax Station Gateway

West Yorkshire

Halifax Station Gateway was developed for Calderdale Metropolitan Borough Council as a £40 million project to strengthen the station's role as a strategic gateway into the town centre.

Working alongside Mott MacDonald, SGP progressed the design to support an updated Outline Business Case submission and detailed planning consent.

SGP advanced the design from RIBA Stage 2 to end of RIBA Stage 3, helping align stakeholder priorities and support wider regeneration objectives linked to infrastructure, jobs and economic growth.

## Key information

<b>Client</b>	Calderdale Metropolitan Borough Council
<b>Services</b>	Architecture
<b>Value</b>	£40 million
<b>Completed</b>	2024



+ VIEW ONLINE

# Huddersfield Gateway Bus Station

West Yorkshire

SGP supported Kirklees Council in developing concept proposals for the redevelopment of Huddersfield Bus Station, shaping a strategic vision that strengthened the transport gateway as part of a wider £250m town centre masterplan.

The project aligned with the Huddersfield Blueprint ten-year vision, supporting improved access, enhanced public spaces and a more welcoming town centre environment.

Early-stage proposals helped create a platform for long-term regeneration, contributing to ambitions for a vibrant cultural offer, thriving business activity and a great place to live.

## Key information

<b>Client</b>	Kirklees Council
<b>Services</b>	Architecture: Concept Proposals



+ VIEW ONLINE

# Huddersfield Bus Station Canopy

West Yorkshire

Since 2017, SGP supported Kirklees Council and West Yorkshire Combined Authority in developing proposals to enhance Huddersfield Bus Station, aligning with the Huddersfield Blueprint and supporting Strategic Outline Business Case approval.

The project strengthened the bus station’s role as a gateway to the town centre, improving visibility and creating stronger connections to wider public realm upgrades, cycling routes and pedestrian links to the railway station.

A 120-metre curved glulam canopy with a full green roof and photovoltaic rooflights framed the station, with improved new cycle parking and seating helping transform arrival experience and support sustainable travel.

## Key information

<b>Client</b>	Kirklees Council
<b>Services</b>	Architecture: Case Study
<b>Value</b>	£7.5 million
<b>Completed</b>	RIBA Stage 3 (Construction 2026)



[+ VIEW ONLINE](#)

# Heckmondwike Bus Station

Kirklees

A comprehensive redevelopment was delivered for Heckmondwike bus hub, strengthening the role of the transport interchange within the town centre and supporting long-term regeneration objectives.

The project focused on creating a high-quality concourse environment that met operational capacity requirements, improving day-to-day passenger experience and supporting more efficient use of the hub.

Connectivity and placemaking were enhanced through coordinated public realm improvements, helping create safer, clearer links between the bus hub and the wider town centre.

## Key information

<b>Client</b>	Kirklees Council & WYCA
<b>Services</b>	Architecture
<b>Value</b>	£10.5 million
<b>Completed</b>	2026
<b>Contractor</b>	Stepnells



+ VIEW ONLINE

# Selby Station

## North Yorkshire

A new station gateway entrance was developed for Selby Station, replacing the 1960s addition and creating a landmark arrival that complemented the listed heritage setting.

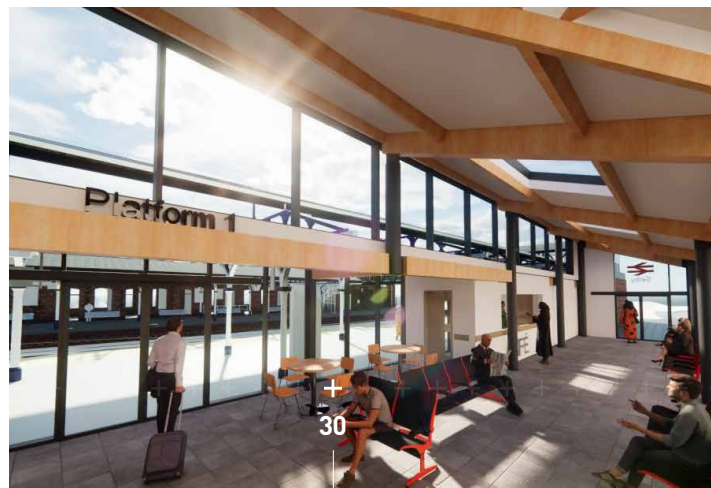
Delivered with WSP, the project enhanced passenger experience while supporting wider connectivity between the station, the park and Selby town centre.

The development improved facilities across the station environment, providing modern waiting areas, retail space, staff accommodation and a Changing Places facility to support inclusive access.

Funded through the Transforming Cities Fund and developed in collaboration with First TransPennine as station operator and Network Rail, the project created a stronger public realm-led approach and a future-ready transport hub.

### Key information

<b>Client</b>	Selby District Council / North Yorkshire County Council
<b>Services</b>	Architecture
<b>Value</b>	£7 million



+ VIEW ONLINE

# Dudley Very Light Railway

## West Midlands

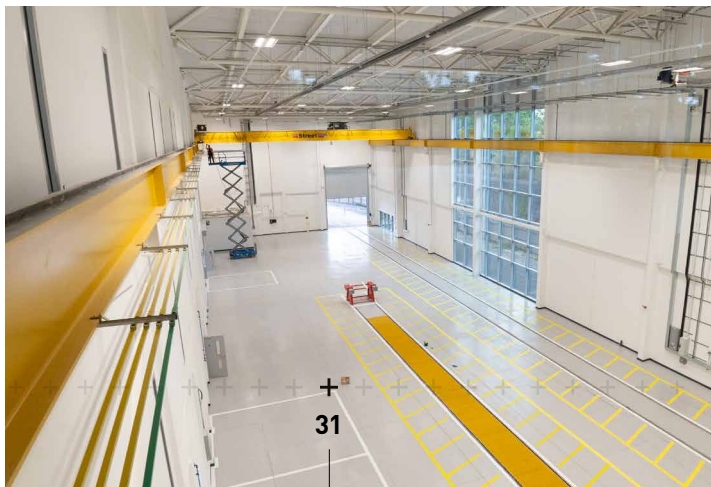
A new state-of-the-art Very Light Rail innovation centre and test line was delivered in Dudley, reconnecting the town with the national rail network for the first time in more than five decades.

The development combined a three-storey Innovation Centre with maintenance and testing areas, classrooms, conference facilities and exhibition space, supporting both vehicle development and skills growth.

As part of a wider programme led by Dudley Metropolitan Borough Council and Warwick Manufacturing Group, SGP provided technical delivery services at RIBA Stages 4 to 6. Flexible partitions future-proofed the building for changing operational needs.

### Key information

<b>Client</b>	Clegg Construction Ltd
<b>Services</b>	Architecture
<b>Size</b>	5,550 sqm (59,747 sqft)
<b>Value</b>	£32 million
<b>BREEAM</b>	Excellent
<b>Completed</b>	2023





[+ VIEW ONLINE](#)

# Bournemouth Aviation

Dorset

A major business park masterplan was delivered for Rigby Group plc, providing around one million sqft of new commercial floorspace across approximately 30 hectares of land.

The development established a high-quality park environment underpinned by sustainable design principles, supporting long-term growth while complementing wider proposals for the area.

A flexible range of unit sizes enabled the park to accommodate diverse occupiers, combining industrial and warehousing space with ancillary offices and hangar provision to support both airside and non-airside operations.

## Key information

<b>Client</b>	Rigby Group plc
<b>Services</b>	Architecture
<b>Value</b>	£96 million
<b>Completed</b>	2022
<b>Contractor</b>	Mildred Construction



# Norwich Airport Hangar and Workshop

Norfolk

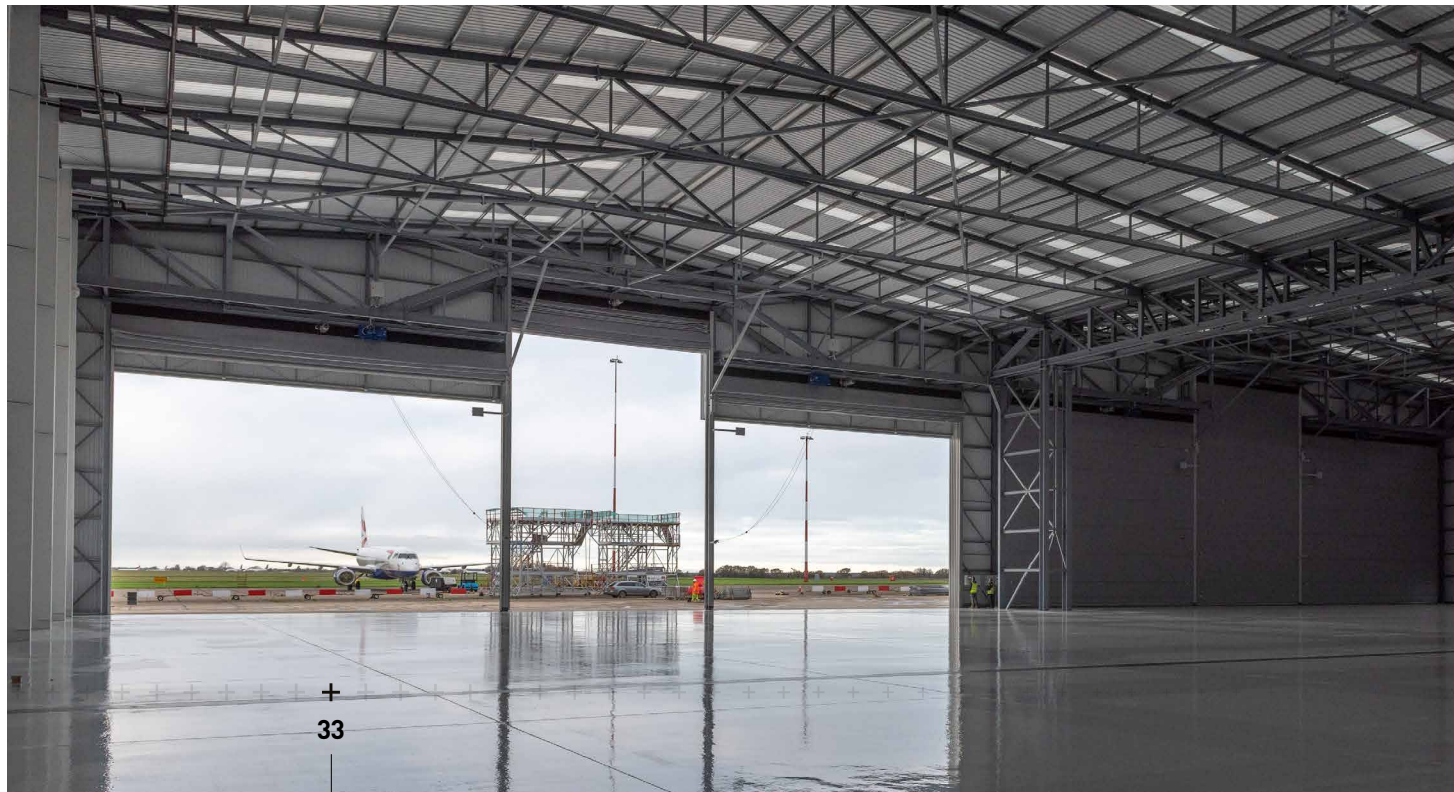
Purpose-built airside facilities were delivered at Norwich International Airport to support continued growth in maintenance, repair and overhaul operations.

The development comprised a 54,000 sqft double-bay hangar with a 15,500 sqft workshop, designed to service two Airbus A320 aircraft and support the expansion of KLM UK Engineering.

Robust operational functionality and direct apron access strengthened long-term capacity, reinforcing Norwich Airport's role as a centre of MRO excellence.

## Key information

<b>Client</b>	Rigby Group plc
<b>Services</b>	Architecture, Masterplanning
<b>Value</b>	£7 million
<b>Completed</b>	2020
<b>Size</b>	6,457 sqm (69,500 sqft)
<b>Contractor</b>	MJS Projects (March) Ltd



+ VIEW ONLINE

# Prologis RFI DIRFT II + III

## Daventry

Masterplanning was delivered for DIRFT II and III for Prologis UK Ltd, supporting the continued growth of a nationally significant multi-modal logistics destination at the heart of the UK distribution network.

The development strengthened long-term capacity and flexibility, with a wide range of unit sizes enabling the park to accommodate diverse occupiers and evolving operational demands.

Rail connectivity added strategic value, linking DIRFT to the West Coast Main Line and providing direct access to major UK and European destinations through key intermodal routes.

### Key information

<b>Client</b>	Prologis UK Ltd
<b>Services</b>	Architecture
<b>Value</b>	£1 billion
<b>Completed</b>	Ongoing





Leeds City Council Tree Planting Countryside Rangers

## Social value

At SGP, architecture is more than a profession, it is a platform for positive change. As a values-led practice, we recognise our responsibility to contribute meaningfully to the communities we serve, working alongside our clients to help meet their social value needs and priorities. We are committed to creating social value, ensuring our activity realises measurable, lasting benefit through the projects we deliver.

Our approach to Social Value is embedded in how we operate and deliver projects. Guided by a clear Social Value Strategy, our activity aligns with our core values and priority focus areas, ensuring commitments translate into measurable outcomes. We collaborate with clients, partners, local organisations and communities to deliver initiatives that create lasting positive impact.

We invest in our people and places through volunteering, skills sharing, education, fundraising and charity partnerships. These actions strengthen communities and contribute to environmental and social outcomes. Our Social Value framework is built around Community, Capability and Resilience (CCR), prioritising robust evidence, transparent reporting and long-term impact through a consistent and responsible approach.



# Social Value

The following initiatives represent a snapshot of our targeted social value activity and reflect some of the ways we support communities and create wider positive impact.



**Student Mentoring**  
Client Partnership

[+ VIEW ONLINE](#)



**Age UK**  
Telephone Service

[+ VIEW ONLINE](#)



**Embodied Carbon**  
Workshop

[+ VIEW ONLINE](#)



**Cancer Research**  
Challenges

[+ VIEW ONLINE](#)



**Schools Programme**  
Curriculum Support

[+ VIEW ONLINE](#)



**Corporate Donations**  
Charities

[+ VIEW ONLINE](#)



**Fundraising**  
Macmillan

[+ VIEW ONLINE](#)



**Age UK**  
Gift at Christmas

[+ VIEW ONLINE](#)



# Awards



# Visit us

[enquiries@stephengeorge.co.uk](mailto:enquiries@stephengeorge.co.uk)

[stephengeorge.co.uk](http://stephengeorge.co.uk)

## Offices

BIRMINGHAM

LEEDS

LEICESTER

LONDON

SOLIHULL

# SGP

[stephengeorge.co.uk](http://stephengeorge.co.uk)