



**Sector**

SCIENCE +  
INNOVATION

**Services**

ARCHITECTURE

CDM PRINCIPAL  
DESIGNER

MASTERPLANNING

BUILDING  
REGULATIONS  
PRINCIPAL  
DESIGNER

INTERIOR + FIT-OUT

BIM

CGI



ABOUT US	<b>01</b>	Who we are + what we do	3	EXPERIENCE	<b>08</b>	Science + Innovation	12
	<b>02</b>	Introduction	4	CONTACT	<b>09</b>	Visit us	30
	<b>03</b>	SGP in numbers	5				
	<b>04</b>	Our core values	6				
	<b>05</b>	Our vision	7				
	<b>06</b>	Sector + service overview	8				
	<b>07</b>	Key contacts	9				



## Who we are + what we do

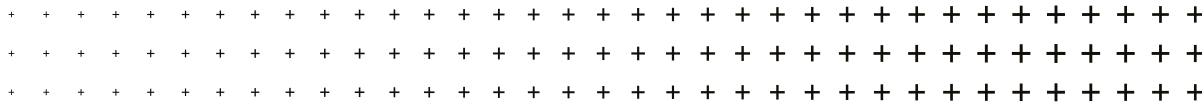
- Established 1970
- 100+ staff
- AJ100 practice
- RIBA President's Award Winner
- Public and private sector
- Varied and diverse portfolio
- Listening to our clients
- Building long-term relationships
- Committed to nurturing an open, inclusive, fair and supportive business
- Embrace duty of care to our community, environment and society
- Knowledge share environment
- Studios across the UK in London, Leicester, Leeds, Solihull and Birmingham

# Introduction

The Science and Innovation team draws on extensive cross-sector knowledge to deliver specialist design solutions across laboratory, workplace and innovation environments, creating tailored responses that align precisely with each client's operational and strategic ambitions.

Active across science parks, innovation hubs and laboratory developments throughout the United Kingdom, the team supports projects from concept design through to detailed lab planning. Designs prioritise talent attraction, user wellbeing and the careful integration of collaborative and private research spaces.

A strong understanding of complex mechanical, electrical and structural requirements ensures buildings perform seamlessly alongside a considered architectural identity. Early-stage advice and adaptive design strategies enable clients to futureproof assets, respond to evolving occupier needs and maximise long-term value.



# SGP in numbers

970+

live projects across SGP

5

offices in the UK

100+

staff members across all offices



MIRA TECH PARK, NUNEATON



# Our core values



## + Fairness

Impartial treatment of all without discrimination. Providing an open environment where all are encouraged to offer ideas. Being consistent in our approach.

## + Integrity

Honesty. Doing what we say and saying what we do. Being open, clear and direct with one another.

## + Quality

Working to the highest possible standards to ensure consistency across everything that we do including the following two values...

## + Service

Offering the best possible assistance and advice to our clients. Going the extra mile to ensure all deadlines are met and key criteria considered.

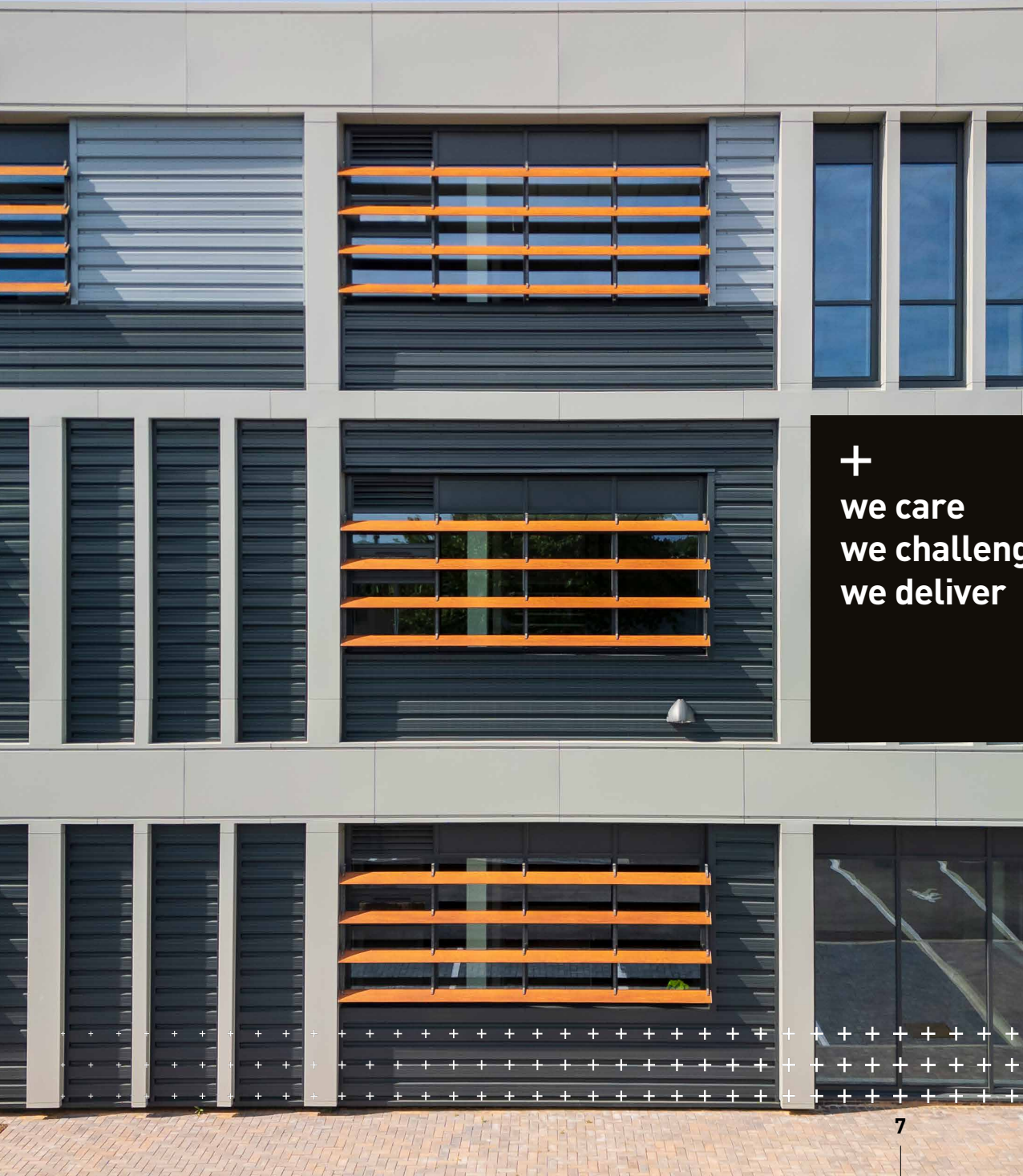
## + Design

Maintaining the highest possible architectural standards, giving us the freedom to undertake exciting projects and to create great places.

## + Social responsibility

We believe we have a responsibility to society and will give freely of our time to help others.





**+**  
**we care**  
**we challenge**  
**we deliver**

## Our vision

We care about client service, values, culture + vision.

We design + deliver a diverse portfolio promoting social value + better places.

# Sector + service overview

The sectors we work in

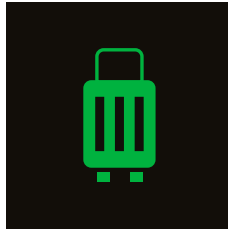
Education



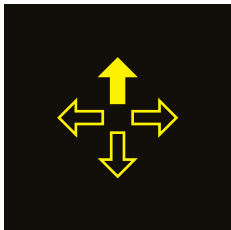
Healthcare



Leisure + Hospitality



Logistics



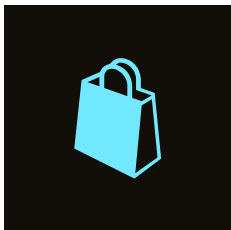
Office



Residential



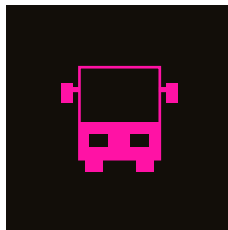
Retail



Science + Innovation

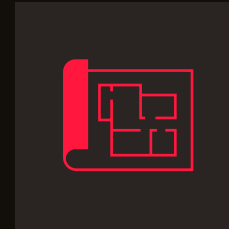


Transport

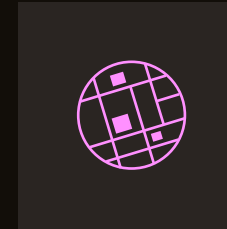


The following services can be provided in house by SGP

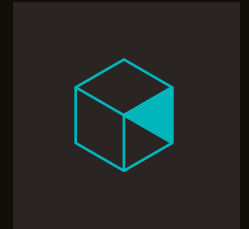
Architecture



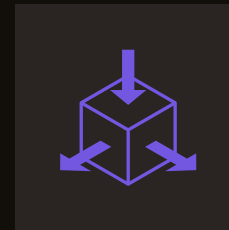
Masterplanning



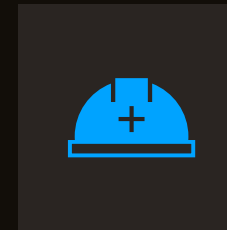
Interior + Fit-out



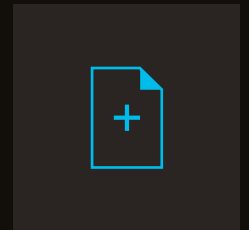
BIM



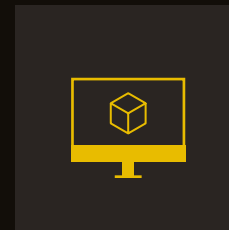
CDM Principal Designer



Building Regulations  
Principal Designer



CGI



Visit our website to find out more

+ ABOUT OUR **SECTORS**

+ ABOUT OUR **SERVICES**

# Key contacts



## James Nicholls

BA(HONS) DIP ARCH DIP AP RIBA

Managing Partner

### PERSONAL PROFILE

Having worked predominantly in the commercial sector for several well-known UK practices, James joined Stephen George + Partners in 1998. He established our Solihull office in 2002 and became a Partner in 2010.

A dedicated strategist, James has designed and delivered many complex industrial, commercial and retail schemes. From this, he has developed an expertise in the logistics and distribution sector and is a regular contributor to the national debate on the future of logistics in influential industry magazines and conferences.

His understanding of clients' commercial requirements and ability to build strong relationships has generated new opportunities for SGP in the UK and overseas.

James chairs our Business Development Group, a key forum in developing our strategy for growth.

+ MORE ABOUT JAMES



## Satnam Flora

BA(HONS) BARCH(HONS) PG DIP AP RIBA

Associate

### PERSONAL PROFILE

Satnam joined the practice in 2004 and is responsible for the design and delivery of commercial projects across a range of RIBA stages. His work is predominantly in the logistics sector, alongside experience in workplace and science and innovation projects, where he leads coordination and manages design and delivery teams.

With experience spanning industrial, office, mixed-use, retail and community projects, Satnam brings strong technical design and detailing skills to ensure efficient and high-quality outcomes. He builds effective relationships with clients and stakeholders, supporting successful project delivery from feasibility through to completion.

Satnam chairs the Delivery Matrix Group, promoting knowledge sharing and consistency across the practice, and is also a Principal Designer and member of the Health and Safety Group. He mentors junior team members and tutors architecture students at De Montfort University.

+ MORE ABOUT SATNAM



## Luke Abbott

BA (HONS) BARCH PG DIP ARCH RIBA

Partner

### PERSONAL PROFILE

Luke manages a number of the practice’s key commercial developer accounts and projects, providing clear, practical advice to navigate complex challenges. He focuses on building strong teams while supporting business development and expanding cross-sector capability.

He has extensive experience in the delivery and coordination of large strategic masterplanning projects for speculative and build-to-suit occupiers, often addressing complex physical, legal and environmental constraints.

Luke has also delivered high-end bespoke residential schemes and has a strong interest in progressive workplace design, recognising how thoughtful architecture can support culture, wellbeing and productivity within organisations.

+ MORE ABOUT LUKE



## Steve Batson

BA(HONS) DIP ARCH DIP AP RIBA MIHEEM

Studio Director

### PERSONAL PROFILE

Steve is a team leader and sector lead for healthcare, specialising in the design of projects across the healthcare and social care environment. He has delivered schemes in acute hospitals, primary care, mental health, the care sector and specialist care, with a focus on enhancing patient experience and improving health outcomes.

An expert in healthcare planning, Steve contributes to the Healthcare Design and Delivery Group and has a strong understanding of regulatory and technical requirements shaping the sector, including the Healthcare Premises Assurance requirements linked to the Building Safety Act.

Steve has also worked on international healthcare initiatives, including the design of a drug-resistant TB ward in Eswatini using digital modelling to develop a low-cost, high-impact solution. He has participated in the EARTH initiative and joined a UKTI delegation in India exploring modular approaches to integrated healthcare delivery.

+ MORE ABOUT STEVE



## Jay Silva

BA(HONS) MARCH PGDIP ARCH ARB RIBA

Associate

### PERSONAL PROFILE

Having joined SGP in 2020, Jay is Deputy Sector Head for Industrial, managing projects from feasibility and planning through to tender and construction. She works closely with clients, contractors and consultants, providing technical leadership, resolving design issues and overseeing budgets and resources.

Jay undertakes feasibility and masterplanning studies and is actively involved in public consultations, bringing a collaborative and commercially aware approach to project delivery.

A Revit Champion, Jay contributes to a number of SGP Matrix Groups, including the Education aspect of SGP’s Social Value, Better Buildings programme, Media and Business Development. She has a strong interest in urban planning, placemaking and the impact of emerging technologies on the future of the built environment.

+ MORE ABOUT JAY



## Joe Marlow

BA(HONS) DIP ARCH MARCH RIBA

Associate: Senior Information Manager and BIM Coordinator

### PERSONAL PROFILE

Joe leads the Information Management and BIM Coordination service, overseeing the Information Manager and BIM Coordinator team, the Model Manager team, and ISO 19650 audits. She plays a key role in ensuring consistent, high-quality digital delivery across projects.

With experience as both an architect and digital coordinator, Joe has delivered projects using innovative procurement routes, including Integrated Project Insurance. She is actively involved in business development and supports the adoption of new methods of working across the practice.

Joe leads the BIM Matrix Group and contributes to the Delivery Matrix Group, championing the use of technology and information management to drive efficiency and innovation within the construction industry.

+ MORE ABOUT JOE



# Science + Innovation

We bring together expertise from across multiple sectors to deliver tailored design solutions for science and innovation environments. From laboratories and headquarters to incubators and office spaces, our approach responds to the specific operational, technical and commercial needs of each client.

Working on both new developments and existing science parks and innovation hubs, we support projects from early concept design through to detailed lab planning and delivery. Our designs balance the need for highly serviced, flexible research environments with the creation of attractive workplaces that help attract and retain talent.

By carefully coordinating complex mechanical, electrical and structural requirements with design quality, we create cohesive, high-performing environments. We also support the adaptation of existing facilities, helping clients respond to changing occupier needs and maximise the long-term value of their assets.



+ VIEW ONLINE

# DRIVE

## Chesterfield

The Derbyshire Rail Industry Innovation Vehicle (DRIVE) was delivered as a modern rail innovation and training centre, forming part of the wider Staveley Town Deal programme and strengthening regional rail capability.

The development provided flexible teaching spaces, specialist research and development facilities including a digital laboratory, and commercial workshop accommodation, supporting education, innovation and supply chain activity under one roof.

A sensitive delivery approach responded to the complex rail setting, with design refinements improving buildability, compliance and long-term value while maintaining architectural quality and integrating carefully with existing heritage structures and live infrastructure.

### Key information

<b>Client</b>	Chesterfield Borough Council
<b>Services</b>	Architecture, CGI, Interior Design, CDM and BRPD Principal Designer
<b>Value</b>	£4 million
<b>Completed</b>	2026
<b>Contractor</b>	Stepnell



+ VIEW ONLINE

# MIRA Tech Park

## Nuneaton

A high-quality research and development facility provides 34,000 sqft of flexible accommodation across two independent units, each incorporating dedicated office and workshop spaces.

The development supports the continued growth of advanced engineering and technology businesses.

Designed to integrate with the wider masterplan, the building reflects a contemporary architectural language while targeting BREEAM Very Good and accommodating photovoltaic panels. Set within a landscaped environment with enhanced green infrastructure, the scheme supports biodiversity and creates an attractive setting for innovation-led occupiers.

### Key information

<b>Client</b>	Evans Randall Investors
<b>Services</b>	Architecture
<b>Size</b>	3,159 sqm (34,000 sqft)
<b>BREEAM</b>	Very Good
<b>Completed</b>	2026
<b>Contractor</b>	GMI Construciton Group plc







# Siemens Healthineers

Oxford

Purpose-built manufacturing and R&D facilities was delivered for Siemens Healthineers, creating a specialist environment designed to support long-term operational performance and future flexibility.

The project prioritised the production process, integrating high-quality manufacturing space with adaptable office accommodation and a coordinated site layout for servicing, parking and safe pedestrian routes.

Sustainability and wellbeing were embedded through net carbon zero in construction ambitions, supported by solar PV, EV charging, improved travel links and BIM-led coordination to strengthen buildability and safety.

## Key information

<b>Client</b>	Tritax Big Box Developments
<b>Services</b>	Architecture, BIM, CDM PD, BRPD
<b>Value</b>	£50 million
<b>Completed</b>	2025
<b>BREEAM</b>	Excellent (EPC A)
<b>Size</b>	35,526 sqm (382,393 sqft)
<b>Contractor</b>	Tanro

+ VIEW ONLINE

# Dudley Very Light Railway

## West Midlands

A new state-of-the-art Very Light Rail innovation centre and test line was delivered in Dudley, reconnecting the town with the national rail network for the first time in more than five decades.

The development combined a three-storey Innovation Centre with maintenance and testing areas, classrooms, conference facilities and exhibition space, supporting both vehicle development and skills growth.

As part of a wider programme led by Dudley Metropolitan Borough Council and Warwick Manufacturing Group, SGP provided technical delivery services at RIBA Stages 4 to 6. Flexible partitions future-proofed the building for changing operational needs.

### Key information

<b>Client</b>	Clegg Construction Ltd
<b>Services</b>	Architecture
<b>Size</b>	5,550 sqm (59,747 sqft)
<b>Value</b>	£32 million
<b>BREEAM</b>	Excellent
<b>Completed</b>	2023



+ VIEW ONLINE

# Dock 3- 5 Space City Leicester

The development delivered three modern research and development buildings designed to support start-ups, workspace providers and growing businesses.

The scheme provides flexible accommodation combining office-style environments with light industrial space, enabling a range of occupiers to adapt the units to suit evolving business needs.

A fabric-first design approach, supported by photovoltaic panels and lifecycle carbon assessment, helped the development achieve Net Zero Carbon – Construction while exceeding sustainability targets.

## Key information

<b>Client</b>	Brackley Property Developments Ltd
<b>Services</b>	Masterplanning, Social Value, Sustainability
<b>Size</b>	5,852 sqm (63,000 sqft)
<b>Value</b>	£16.5 million
<b>BREEAM</b>	Very Good / Net Zero Carbon – Construction
<b>Completed</b>	2024
<b>Contractor</b>	Wilten Construction



+ VIEW ONLINE

# Dock 2 Space City

## Leicester

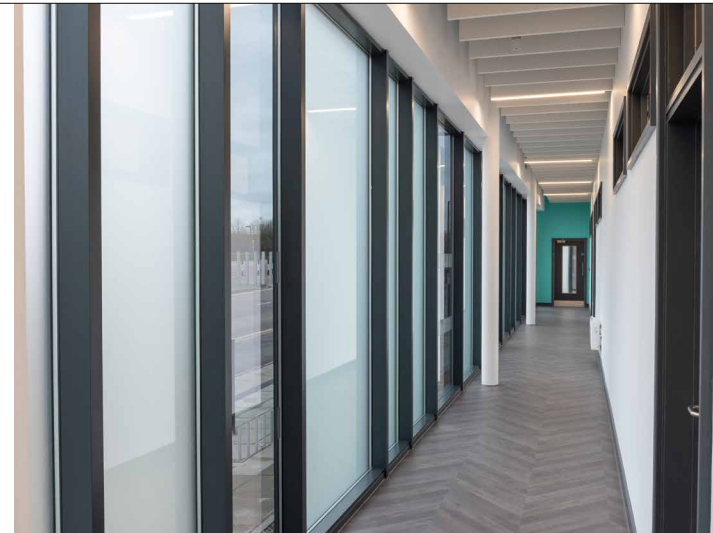
The Dock 2 development delivered flexible office and workshop space designed to complement the existing Dock facility, supporting start-up and growing businesses within a cohesive and established setting.

The building was conceived as a strong, unified volume, with key elements such as entrances, stairwells and shared spaces clearly expressed to enhance usability and identity.

A carefully considered elevational approach emphasised verticality along the building's length, while strategic window placement ensured natural light to all units, even when subdivided. The industrial aesthetic, defined by sinusoidal cladding and a Staffordshire blue brick base, responded to both the original Dock building and the wider local context.

### Key information

<b>Client</b>	Brackley Property Development
<b>Services</b>	Architecture
<b>Value</b>	£XX million
<b>Completed</b>	2021
<b>Contractor</b>	Wiltan Construction



+ VIEW ONLINE

# NAMRC Infinity Park

## Derby

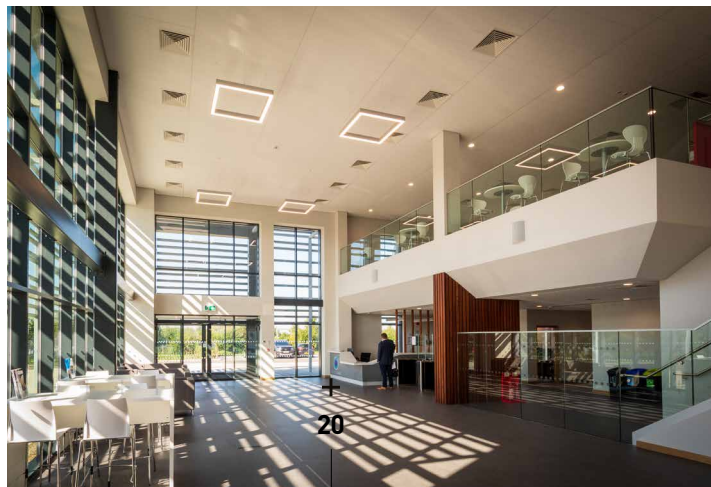
Delivered within Infinity Park Derby's Enterprise Zone, the 508,083 sqft Logikor unit provided high-quality warehouse and industrial accommodation designed for long-term occupier demand.

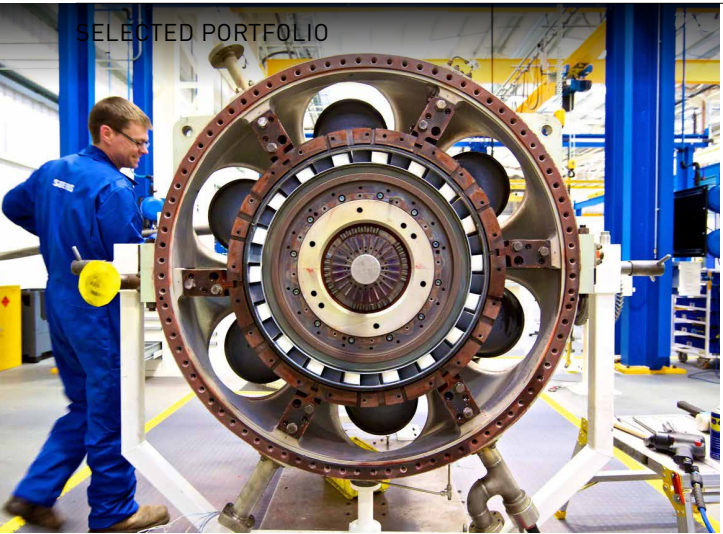
The development brought together a manufacturing hall with integrated office and welfare space, enabling flexible day-to-day operation and efficient collaboration between production and technical teams.

A strong architectural identity and high-quality arrival experience reinforced the organisation's presence on the park, while landscape enhancements improved the setting and supported long-term environmental value.

### Key information

<b>Client</b>	Infinity Park Derby LLP
<b>Services</b>	Architecture
<b>Size</b>	4,300 sqm (46,904 sqft)
<b>Value</b>	£20 million
<b>Completed</b>	2023
<b>BREEAM</b>	Good (EPC A+)
<b>Contractor</b>	Stepnell





# Siemens

## Lincoln

The building was planned to maximise operational efficiency, with 15m deep office floor plates arranged separately from the workshop to create a clear and practical division of uses. This approach supported both workplace functionality and long-term flexibility.

Efficient compound columns within the workshop enabled flexible crane operation, while a 9m x 24m structural grid maximised usability and efficiency across the wider building. Together, these elements created a robust and adaptable working environment tailored to industrial requirements.

### Key information

<b>Client</b>	St.Modwen Properties
<b>Services</b>	Architecture
<b>Value</b>	£12 million
<b>Size</b>	12,100 sqm (130,243 sqft)
<b>Completed</b>	2013
<b>BREEAM</b>	Outstanding



+ VIEW ONLINE

# Loughborough Science + Enterprise Park

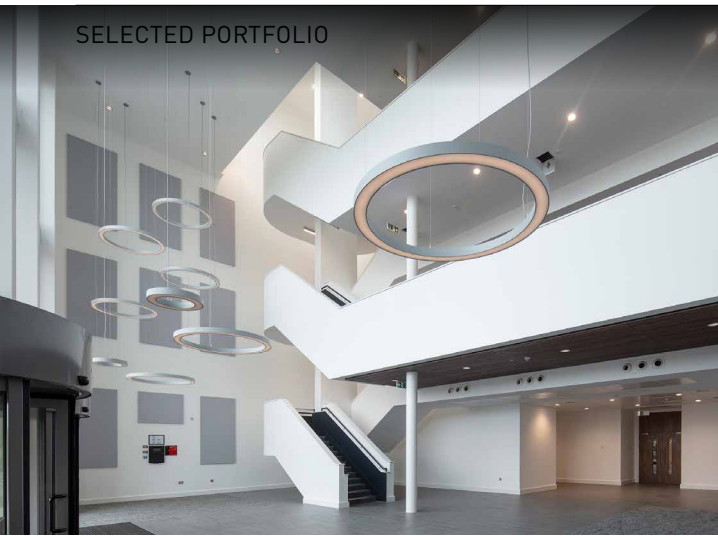
Leicestershire

A high-quality office development at Loughborough University Science and Enterprise Park delivered flexible Grade A workspace, supporting innovation and business growth. Funded by Leicestershire County Council, the scheme formed part of a wider campus expansion, helping attract new occupiers.

The building was positioned within a strong landscape framework to create a clear arrival and focal point, with a part three/part four storey form and glazed atrium.

## Key information

<b>Client</b>	Leicestershire County Council
<b>Services</b>	Architecture, CGI, BIM
<b>Value</b>	£21 million
<b>Size</b>	7,432 sqm (80,000 sqft)
<b>Completed</b>	2020
<b>BREEAM</b>	Very Good
<b>Contractor</b>	Wates Construction Ltd



+ VIEW ONLINE

# Nexus Training Facility

## South Shields

A state-of-the-art Metro Maintenance and Renewals Skills Centre was delivered at South Shields, providing a training facility for more than 1,000 people working across the Metro rail system.

Maintenance and training were combined within a single building, centred around an 80m-long double-height maintenance space with supporting teaching and staff facilities. An overbudget two-building proposal was reimagined as one efficient solution.

The unified approach reduced capital and operational costs, improved coordination and delivered a flexible, cost-effective outcome that maximised value for Nexus.

### Key information

<b>Client</b>	Nexus
<b>Services</b>	Architecture
<b>Size</b>	3,310 sqm (33,500 sqft)
<b>Value</b>	£8.4 million
<b>Completed</b>	2020
<b>Contractor</b>	Galliford Try



# NEXUS LEARNING CENTRE



1

2

[+ VIEW ONLINE](#)

# SusCon

## Dartford

A specialist training and research facility at SusCon, Dartford was designed to support education in sustainable construction, creating a hands-on learning environment that demonstrates best practice in low-impact building design.

Delivered through a public and private partnership, the centre achieved a BREEAM 'Outstanding' rating, setting a benchmark for educational buildings at the time. The scheme was conceived as a live teaching tool, embedding sustainability into both its design and operation to equip users with practical skills for the future.

### Key information

<b>Client</b>	Dartford Borough Council / Prologis UK Ltd
<b>Services</b>	Architecture
<b>Value</b>	£6.5 million
<b>Completed</b>	2014
<b>BREEAM</b>	Outstanding
<b>Contractor</b>	Winvic Construction Ltd
<b>Awards</b>	Winner, Low Carbon Design Award for Environmental Initiative, RIBA EM Awards 2011 and Commended, Out of Region Award, RIBA EM Awards 2011





+ VIEW ONLINE

# Steris

## Leicester

Operations were consolidated into a single high-quality facility, creating an efficient base that supported long-term growth and day-to-day productivity.

The development combined contemporary production and storage space with office and R&D accommodation, using strong glazing and a refined neutral palette to showcase product quality and reinforce client presence.

Architectural form and massing were carefully composed to create a distinctive gateway building, adding long-term value through a clear identity, improved functionality and a workplace environment designed around evolving business needs.

### Key information

<b>Client</b>	Albert Browne Ltd
<b>Services</b>	Architecture
<b>Value</b>	£7.7 million
<b>Completed</b>	2018
<b>BREEAM</b>	Good
<b>Size</b>	5,900 sqm (63,507 sqft)
<b>Contractor</b>	A&H Construction & Developments



# Gallery selection



**The Hive**  
London Gateway

[+ VIEW ONLINE](#)



**Workspace Project**  
Confidential

[+ VIEW ONLINE](#)



**The Hub DIRFT**  
Daventry

[+ VIEW ONLINE](#)



**Yu Energy Waterside**  
Leicester



**Dock 2 Pioneer Park**  
Leicester

[+ VIEW ONLINE](#)



**Nexus Training Facility**  
South Shields

[+ VIEW ONLINE](#)



**IHEEM Offices**  
Portsmouth

[+ VIEW ONLINE](#)



**Siemens**  
Lincoln

# Gallery selection



**Longslade College**  
Leicester

[+ VIEW ONLINE](#)



**Aviation Business Park**  
Bournemouth

[+ VIEW ONLINE](#)



**SusCon**  
Dartford

[+ VIEW ONLINE](#)



**DC3 DIRFT**  
Daventry

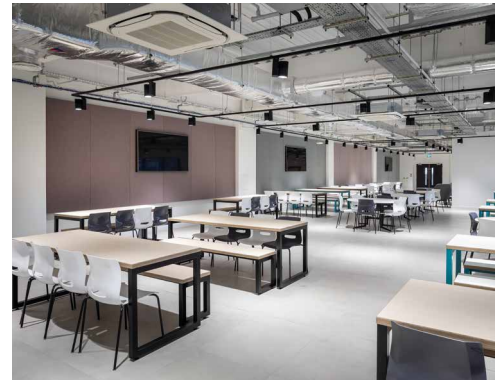
[+ VIEW ONLINE](#)



**Peugeot Citroen**  
Coventry



**Centrica Blythe Valley**  
Solihull



**DC2 DIRFT**  
Daventry

[+ VIEW ONLINE](#)



**Herman Miller**  
Melksham

[+ VIEW ONLINE](#)

# Visit us

[enquiries@stephengeorge.co.uk](mailto:enquiries@stephengeorge.co.uk)

[stephengeorge.co.uk](http://stephengeorge.co.uk)

## Offices

---

BIRMINGHAM

---

LEEDS

---

LEICESTER

---

LONDON

---

SOLIHUL



# SGP

[stephengeorge.co.uk](http://stephengeorge.co.uk)